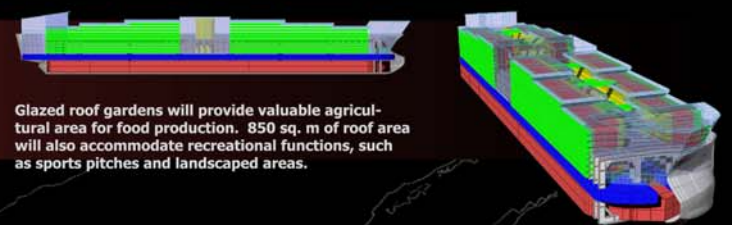
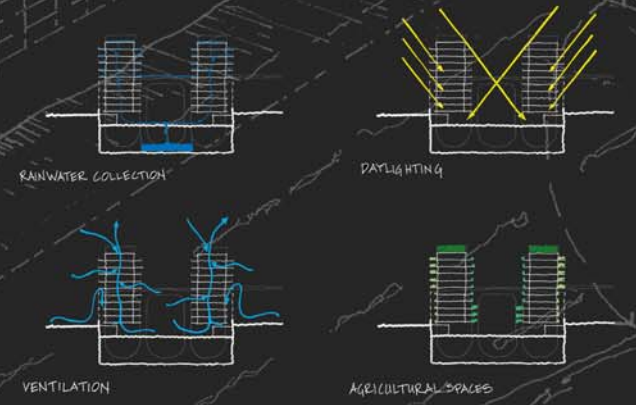
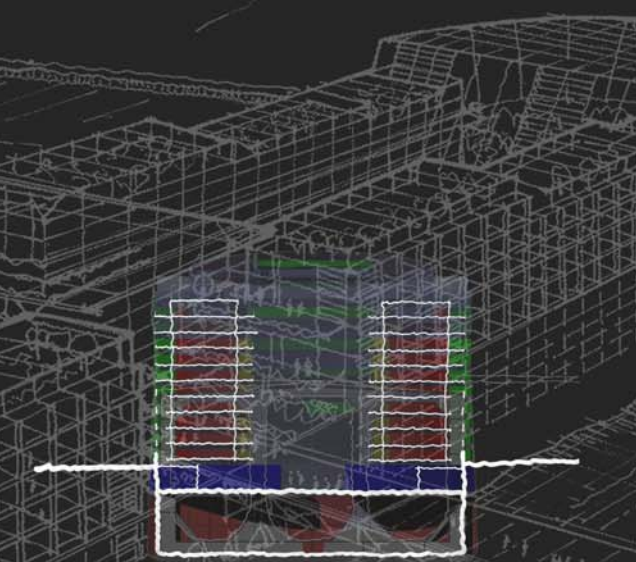
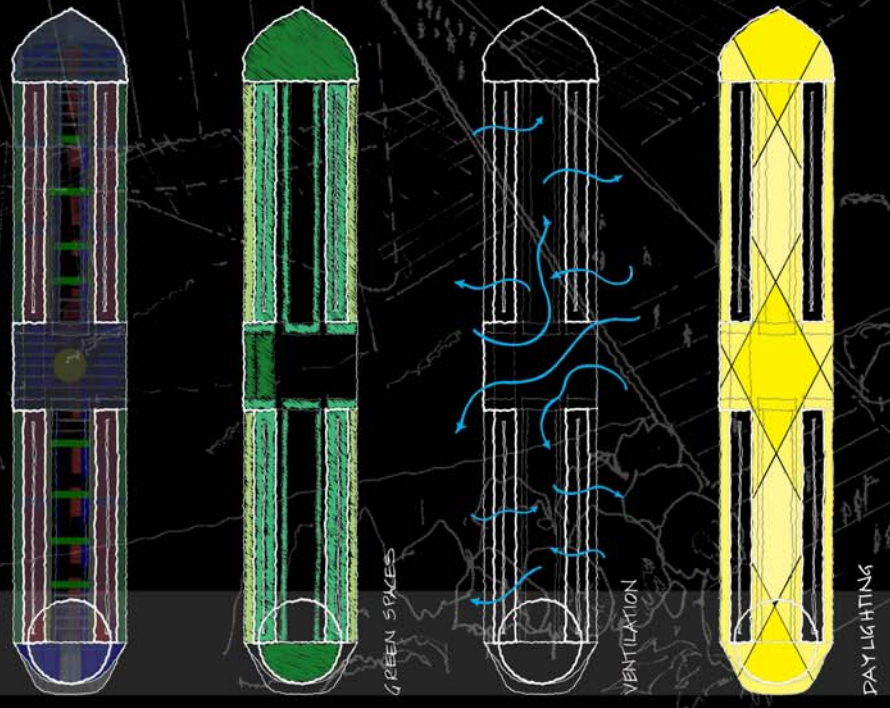


BUILDING A SUSTAINABLE WORLD - Life in the Balance

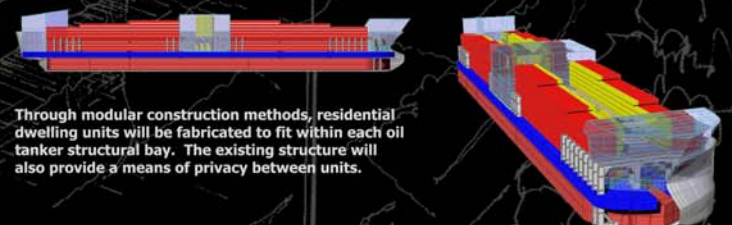
THE ARK: OIL TANKER TO ECO-COMMUNITY



Glazed roof gardens will provide valuable agricultural area for food production. 850 sq. m of roof area will also accommodate recreational functions, such as sports pitches and landscaped areas.



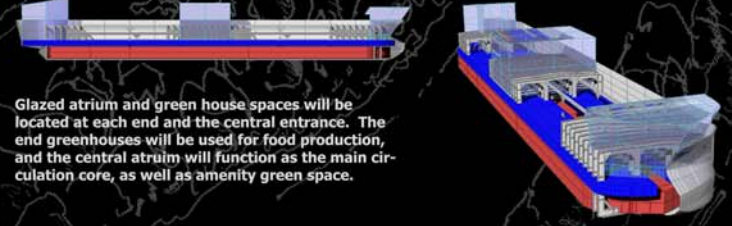
Every residential dwelling will have private external amenity space in the form of balconies at the external ship hull shell. The personal gardens will also include 1 sq. m for food production.



Through modular construction methods, residential dwelling units will be fabricated to fit within each oil tanker structural bay. The existing structure will also provide a means of privacy between units.



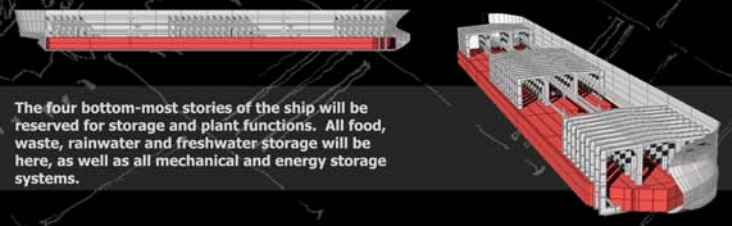
Both horizontal and vertical circulation will be concentrated within the central open space, above the 'urban street' located below.



Glazed atrium and green house spaces will be located at each end and the central entrance. The end greenhouses will be used for food production, and the central atrium will function as the main circulation core, as well as amenity green space.



Perhaps the most animated space within the ship, all educational, retail, medical and other non-residential functions will be located at the 'street' level. The 'street' will be a double-height space which is open to the elements and mimic the traditional urban environment.



The four bottom-most stories of the ship will be reserved for storage and plant functions. All food, waste, rainwater and freshwater storage will be here, as well as all mechanical and energy storage systems.

Proportional Land Areas Required to Sustain One Ship, or 2,000 people